



T1 EVO

Audiophile Entry Level Turntable

- **T1 EVO Standard MSRP 399€ (incl. VAT)**
- **T1 EVO Phono MSRP 449€ (incl. VAT)**
- **T1 EVO BT MSRP 499€ (incl. VAT)**

Walnut finish: 

Satin White: 

High-Gloss Black: 

- **NEW** 3 available models: Standard, BT and Phono
 - **BT**: With BT 5.0, aptX HD for wireless streaming
 - **Phono**: With switchable phono preamp
- **NEW** electronic speed change for all models
- **NEW** pre-adjusted Ortofon OM10 cartridge
- **NEW** big anti-resonant sub-platter design
- Heavy 8mm, zero-resonance blasted-glass platter
- Precision CNC'd heavy full chassis
- 8,6" highly precise and light aluminium tonearm
- Low friction, vibration free tonearm bearing
- One-piece tonearm design with integrated headshell
- Low-capacitance Connect it Phono E RCA cable incl.
- Vibration absorbing feet
- Elegant dustcover with adjustable hinges
- Available in High-Gloss Black, Satin White and Walnut
- Hand-made in Europe

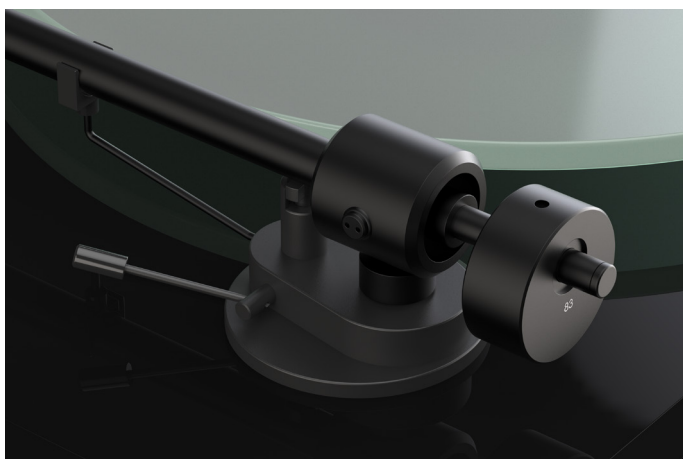
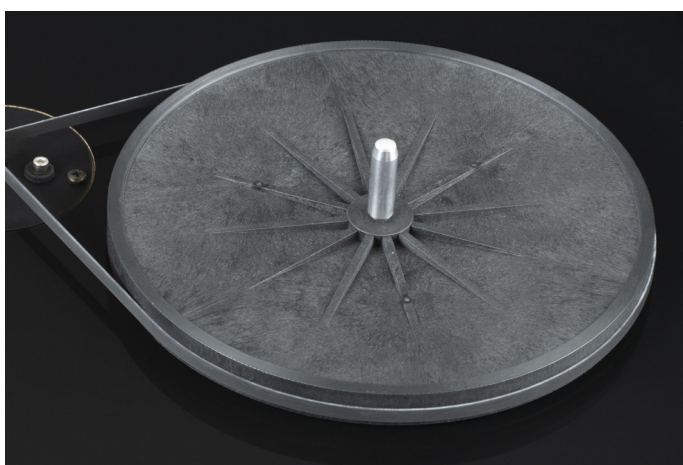
Speed: 33, 45 (electronic speed change)
Principle: Belt drive
Speed variance: 33: 0.7% 45: 0.6%
Wow & Flutter: 33: 0.25% 45: 0.23%
Platter: Heavy 8mm, blasted-glass platter with felt mat
Main bearing: Stainless steel/brass
Signal to noise: 65dB
Tonearm: 8.6" aluminium
Effective arm length: 218.5 mm
Overhang: 22.0 mm
Effective tonearm mass: 8.0 g
Counterweight for mass: 5 - 10g (pre-mounted)
Tracking force range: 0 - 50mN (17.5 mN pre-adjusted)
Outputs: RCA
Included accessories: dustcover, feltmat, power supply, high-quality phono/line RCA cable
Power Supply: 110 - 240V/50, 60Hz; 15 V DC 800mA
Power consumption: 4.5 Watt max
Dimensions: 415x100x335 mm (WxHxD)
Weight: 3.8 kg net

T1 EVO - your entry into vinyl

The T1 EVO aims to deliver true high-fidelity sound on a limited budget. Boasting premium materials, stylish aesthetics and a rich, lively sound, the extensive development process has ensured that there has been no compromise in the sound performance when achieving such an affordable price.

The stylish CNC-machined plinth, available in High Gloss Black, Satin White or Walnut finish, features no plastic parts and is carefully manufactured to ensure there are no hollow spaces inside, therefore avoiding unwanted vibrations within the chassis.

Carrying this philosophy through the design, the glass platter is also a heavy, zero-resonance design – again avoiding the flaws of plastic or lightweight steel alternatives. Finally, the purpose-chosen turntable feet also do a good job of isolating the T1 EVO from ambient vibrations around your hi-fi system.



Audiophile Design

In the T1 EVO, the motor drives a belt, attached to a new bigger sub-platter, which is mounted into an ultra-precise 0.001mm main bearing with a hardened steel axle and brass bushing.

Alongside the chosen motor system, the T1 EVO is therefore able to ensure a smooth, anti-resonant rotational platform for the tonearm and cartridge to ride across.

With its straight, 8.6" effective length and stiff aluminum construction, the one-piece tonearm also features low-friction bearings for absolute accuracy in use.

Besides the clean and stylish looks, the integrated headshell won't cause any additional vibrations either, and is a big improvement over other detachable, screwed-on or glued-on headshells!

Supplied with an Ortofon OM 10 Moving Magnet cartridge, featuring an elliptical diamond stylus tip; this is a true hi-fi playback system with no corners cut.

The T1 EVO is then finished with super shielded, semi-symmetrical, low-capacitance phono cables, purpose-designed by Pro-Ject – not off-the shelf RCA cables. There is also a dust cover for extra protection and a felt mat to protect your records.

The T1 EVO is a new affordable marvel. Still made in Europe by a turntable factory with decades of experience, it is a true hi-fi turntable that looks and sounds sublime.

