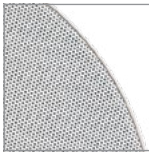
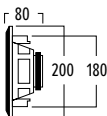
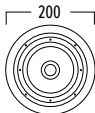
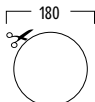




black grill (option)



DIMENSIONS

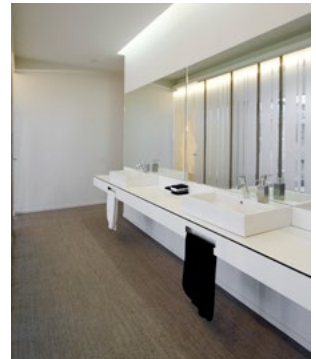


TECHNICAL SPECIFICATIONS

range	<50m ²
system	2-way coaxial
woofer	5,25" polypropylene carbon
tweeter	2 x 0,5" polycarbonate
amp power	10 - 100W (recommended)
sensitivity	87dB
impedance	8Ω
frequency range	95Hz - 20kHz
dimensions cut-out (Ø)	180mm
dimensions (Ø x d)	200 x 80mm
weight / piece	1,1kg
composition	ABS / metal grill
colour	white
features	paintable grill
options	acoustic kit (KITR04) black grill (GRILLHPR0525B)

FL550

This stereo built-in speaker is flatter and more invisible than any of its predecessors. The frame has been reduced down to 1 millimetre, the frame thickness more than halved. The grille of the speaker is extremely fine-tuned and feels almost like silk. The frame simply clicks itself into place with adjusting screws, you fit the grill magnetically. What's more, it produces a fully-fledged stereo effect on its own thanks to its double tweeter and double connections.



Only room for one connection, but still looking for a stereo effect? The FL550 is the solution.

